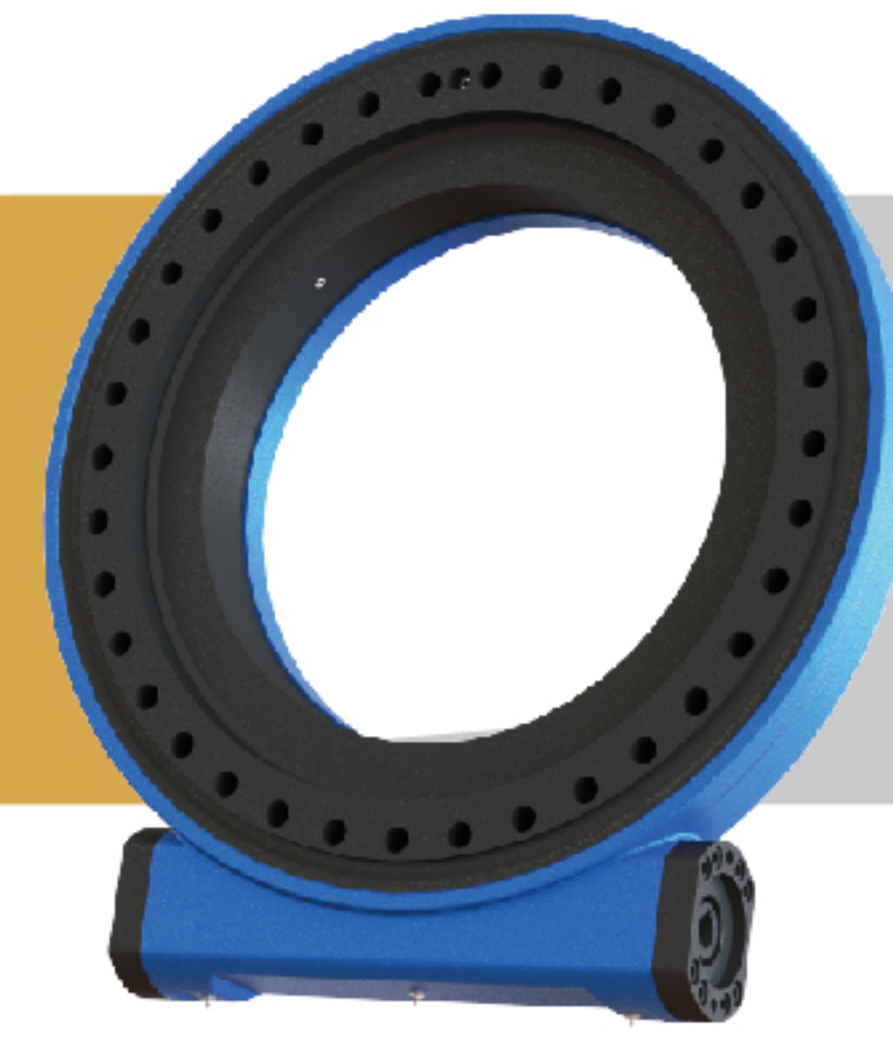


SLEWING DRIVE 回转式减速器

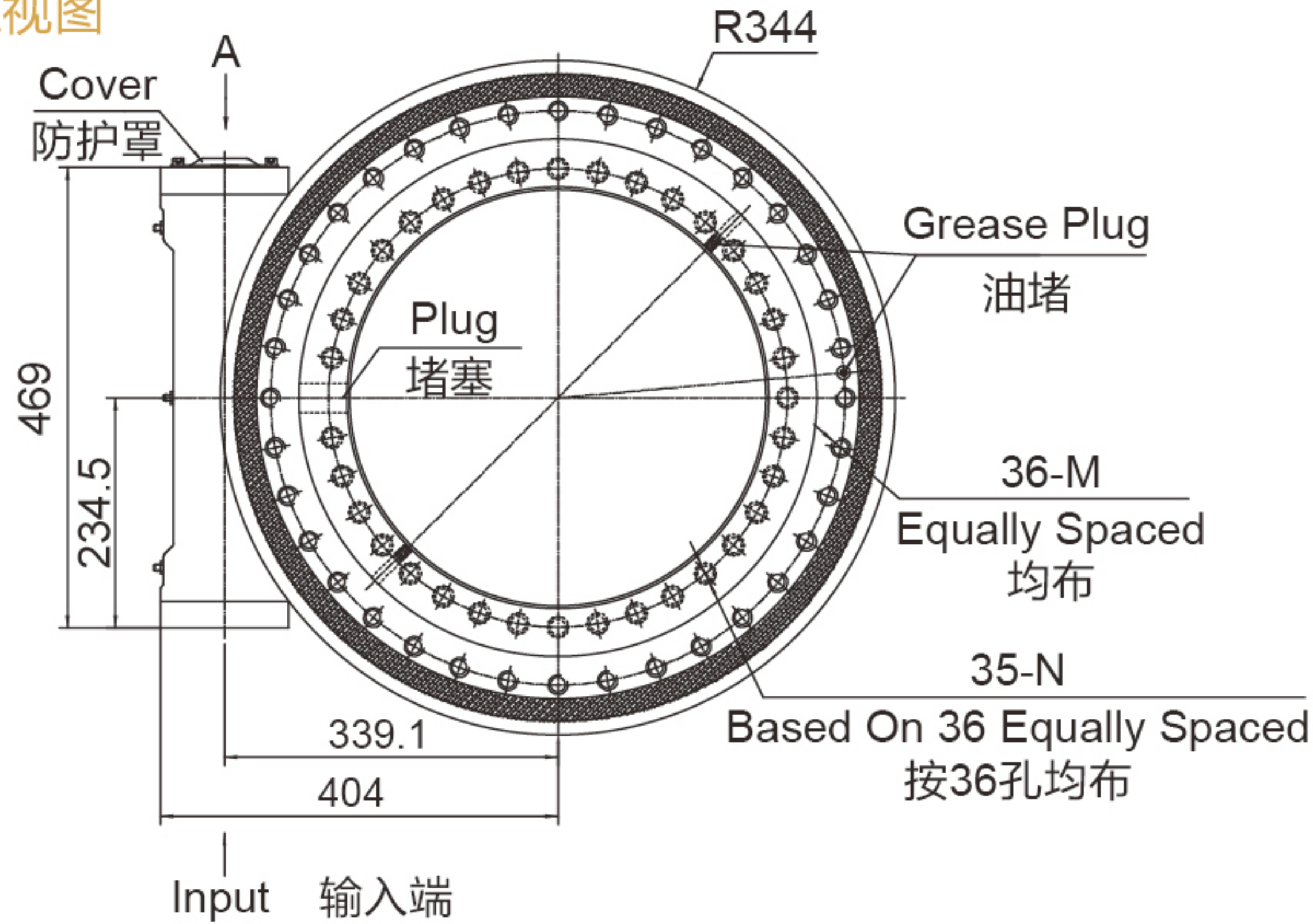
# SEA21/PEA21



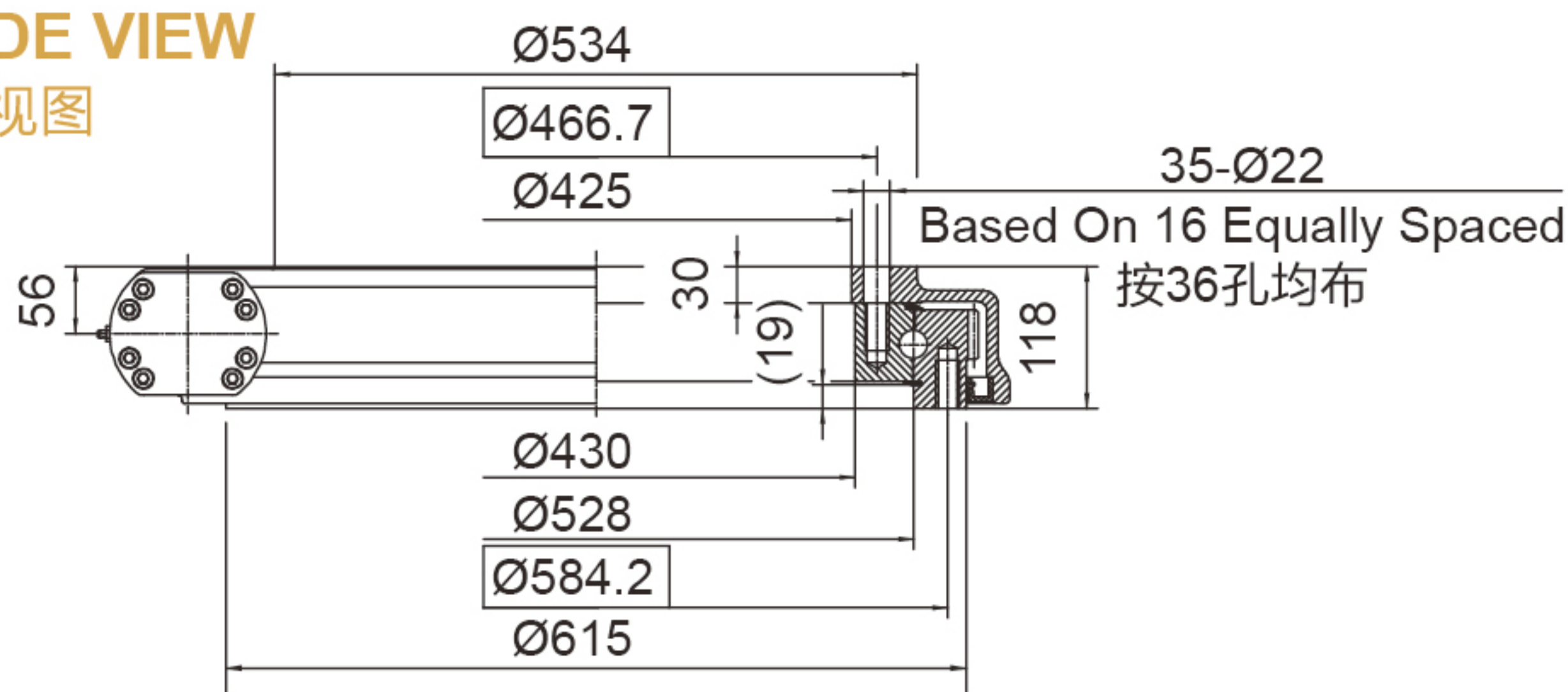
UNITS/单位:mm  
1inch=25.4mm

Weight:140kg

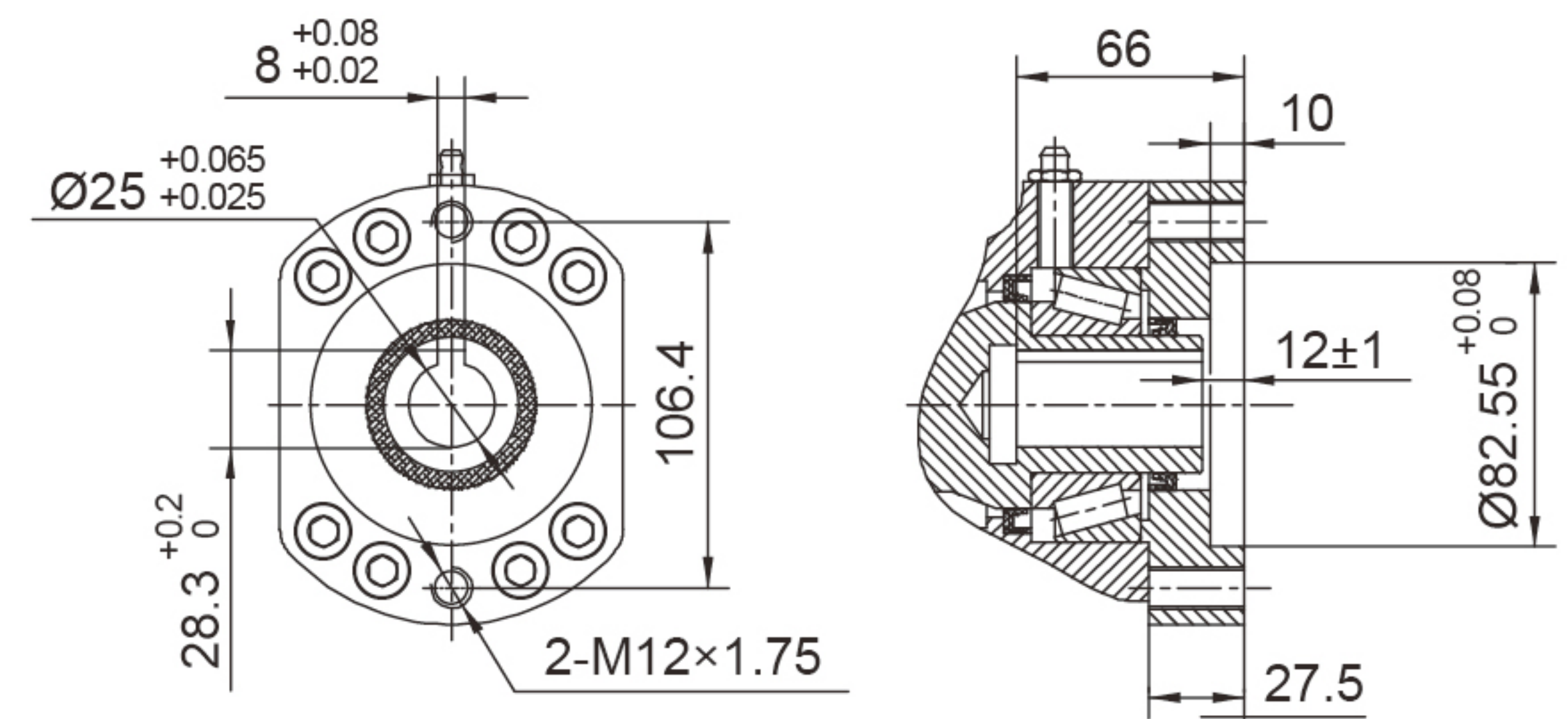
**FRONT VIEW**  
正视图



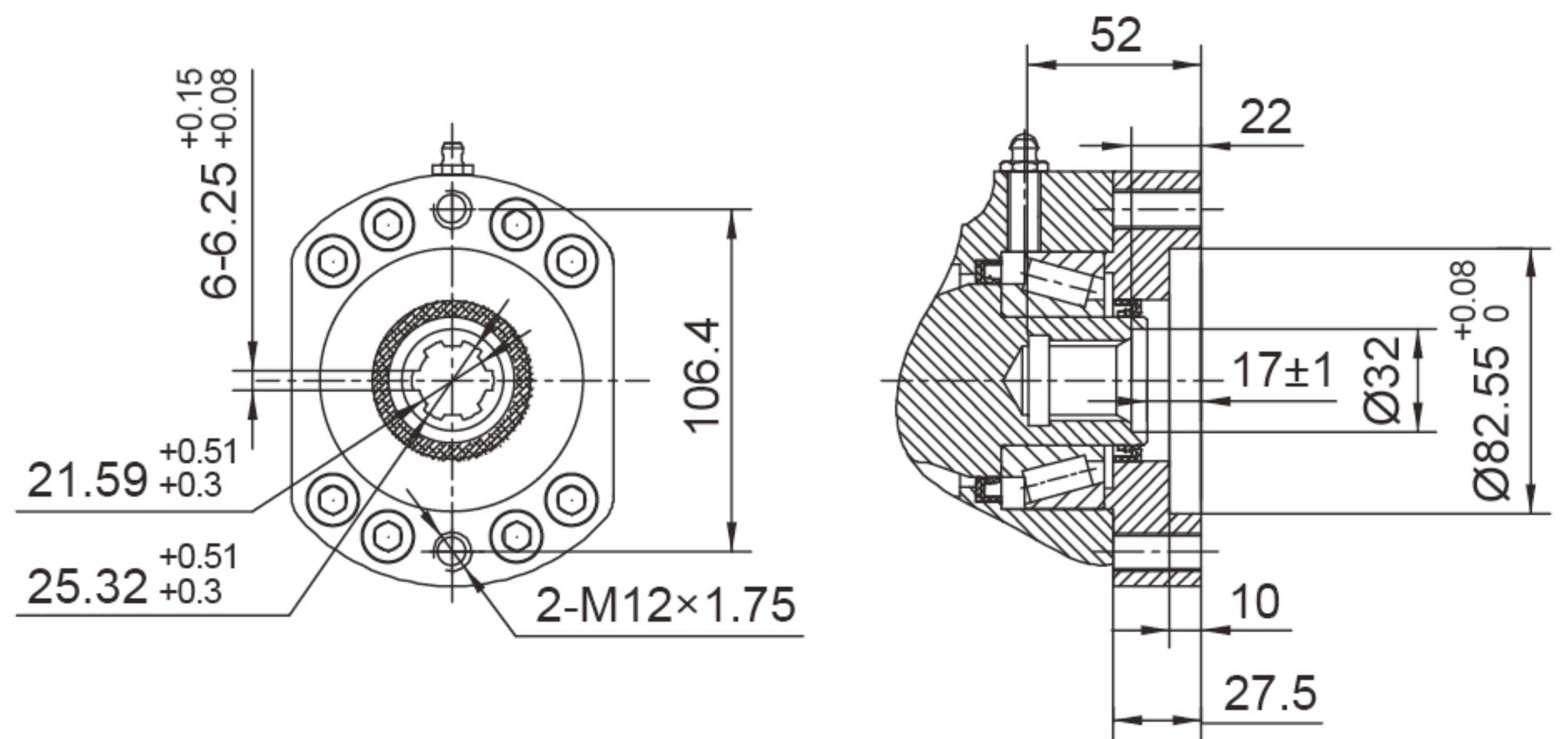
**SIDE VIEW**  
侧视图



**INPUT** 输入端视图

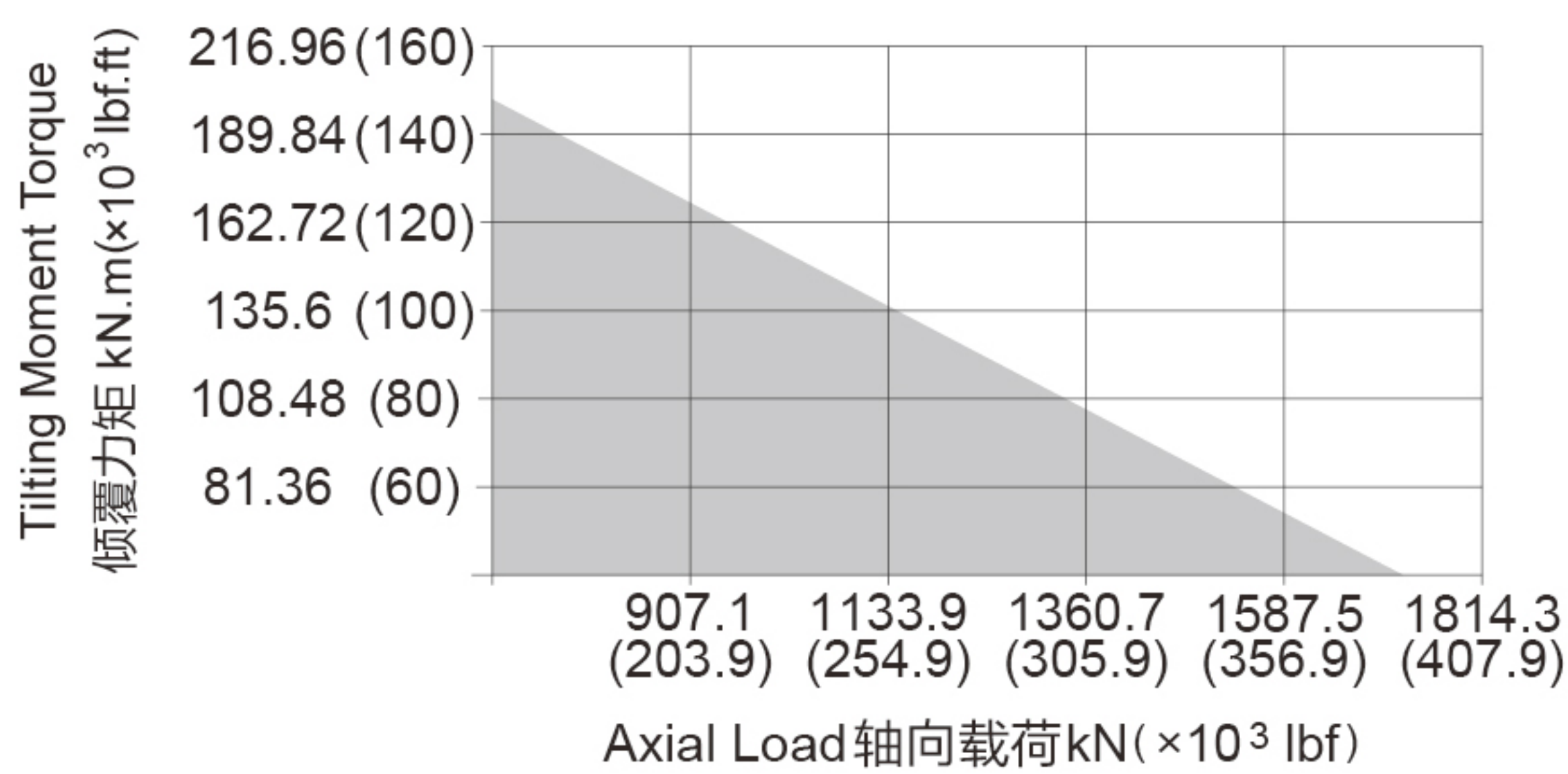


Ø25



6B Spline花键

**承载力矩图** MOMENT LOAD CHART



**安装孔选项** Mounting Holes Option

Code 代码	M (Outer Ring 外圈)	N (Inner Ring 内圈)
—	M20×2.5 Tap (攻深)40	M20×2.5 Tap (攻深)40
T	M20×2.5 Tap (攻深)40	Ø22 Thru (通孔)
B	3/4"-10UNC-2B Tap (攻深)40	3/4"-10UNC-2B Tap (攻深)40
BT	3/4"-10UNC-2B Tap (攻深)40	Ø22 Thru (通孔)

**性能参数表** Slewing Drive Performance Parameters

Model	Output Torque	Tilting Moment Torque	Holding Torque	Static Axial Rating	Static Radial Rating	Dynamic Axial Rating	Dynamic Radial Rating	Gear Ratio	Tracking Precision	Weight
类型	输出转矩	倾覆力矩	保持力矩	轴向静载荷	径向静载荷	轴向动载荷	径向动载荷	减速比	精度等级	重量
SEA21	15 kN.m	203 kN.m	70.5 kN.m	1598 kN	640 kN	385 kN	335 kN	125 : 1	≤ 0.15°	140 kg
	11000 lbf.ft	150×10 <sup>3</sup> lbf.ft	52×10 <sup>3</sup> lbf.ft	359×10 <sup>3</sup> lbf	144×10 <sup>3</sup> lbf	87×10 <sup>3</sup> lbf	75×10 <sup>3</sup> lbf			
PEA21	15 kN.m	203 N.m	70.5 kN.m	1598 kN	640 kN	385 kN	335 kN	125 : 1	≤ 0.09°	140 kg
	11000 lbf.ft	150×10 <sup>3</sup> lbf.ft	52×10 <sup>3</sup> lbf.ft	359×10 <sup>3</sup> lbf	144×10 <sup>3</sup> lbf	87×10 <sup>3</sup> lbf	75×10 <sup>3</sup> lbf			

"A" VIEW AS INPUT IS ALLOWED  
输入端允许在 "A" 向视图

SPECIAL DESIGN BASE ON CUSTOMER'S REQUIREMENT  
可根据顾客的要求进行非标设计



- Please be sure to remain under the curve. 选型时请确保实际载荷在曲线范围内。
- This drawing is just for your refenece. 以上图纸仅供参考。
- This drawing is susbject to change due to new design without prior notice. 本公司保留改进产品的权利而不再另行通知。
- Please contact the technical department for dimensions and performance parameters of the drives. 如果需要装置的外形尺寸和性能参考数, 请与技术部门联系。