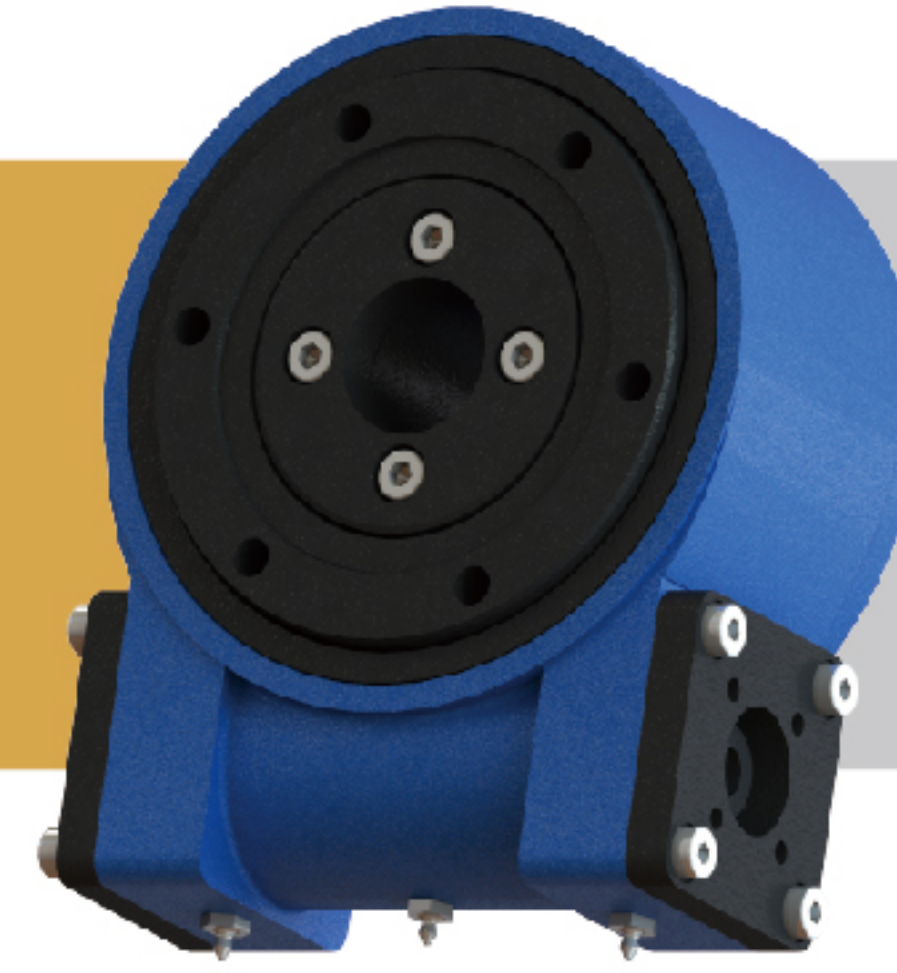


SLEWING DRIVE 回转式减速器

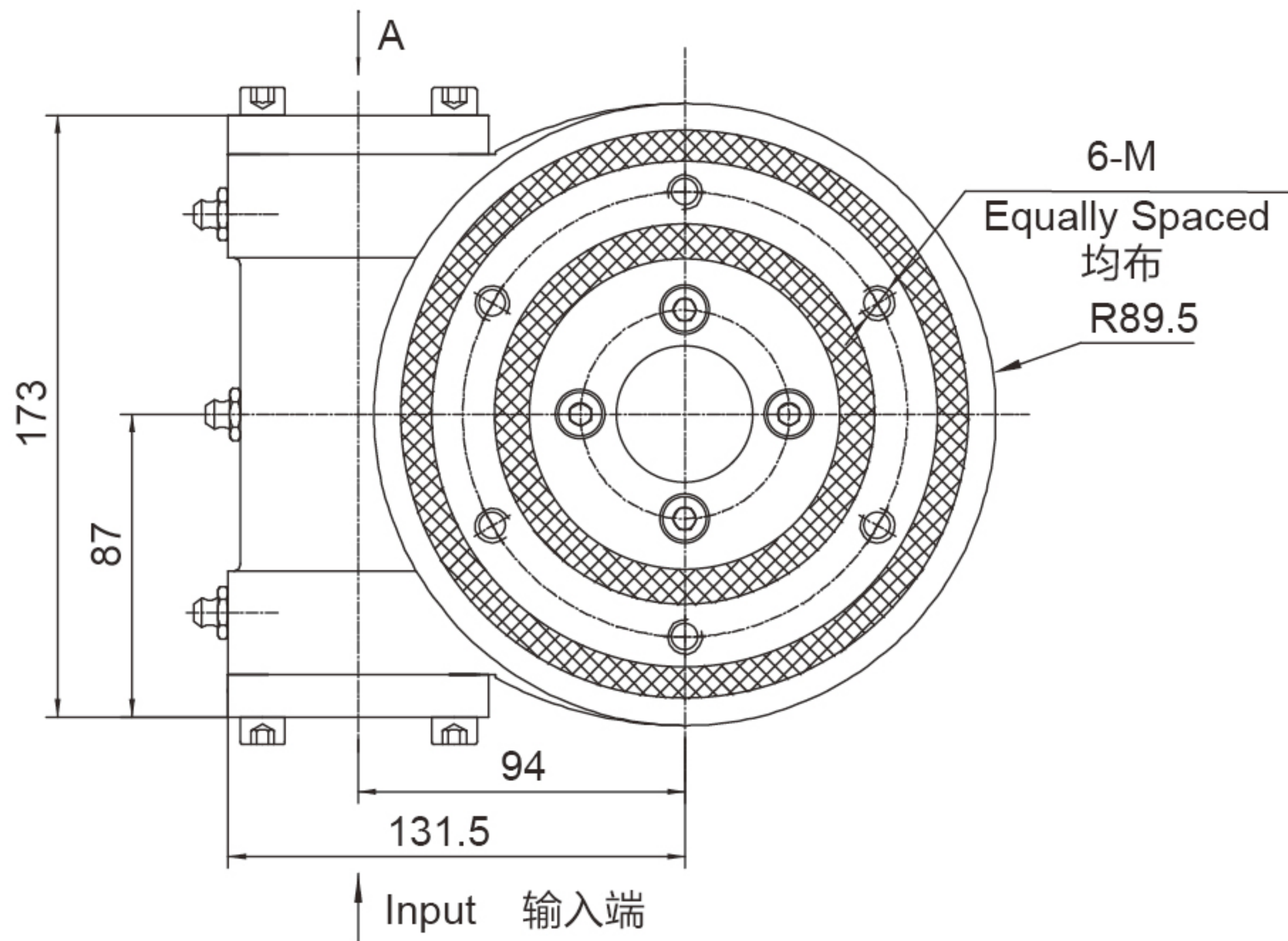
SE5C-PE5C



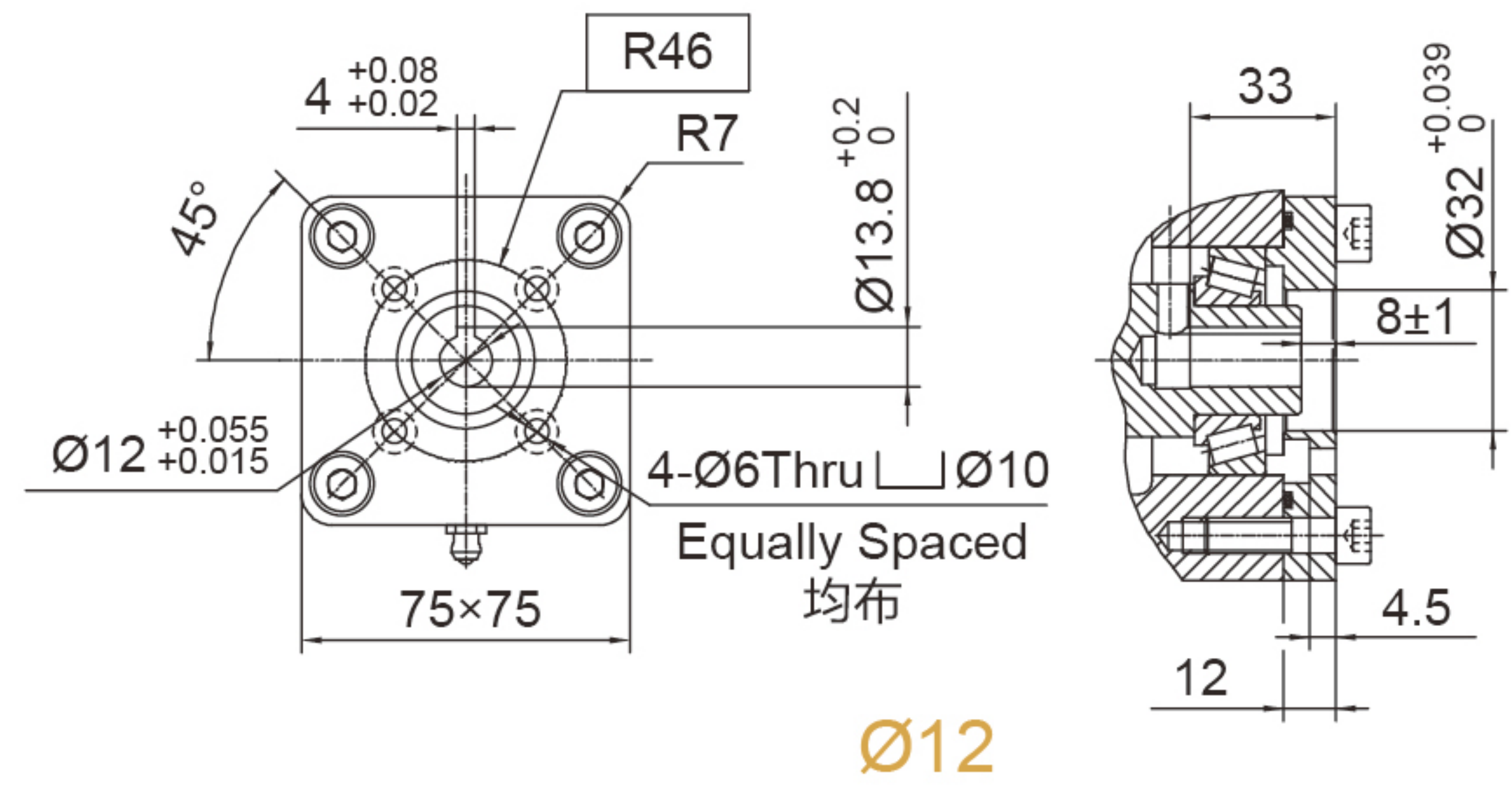
UNITS/单位:mm
1inch=25.4mm

Weight:16kg

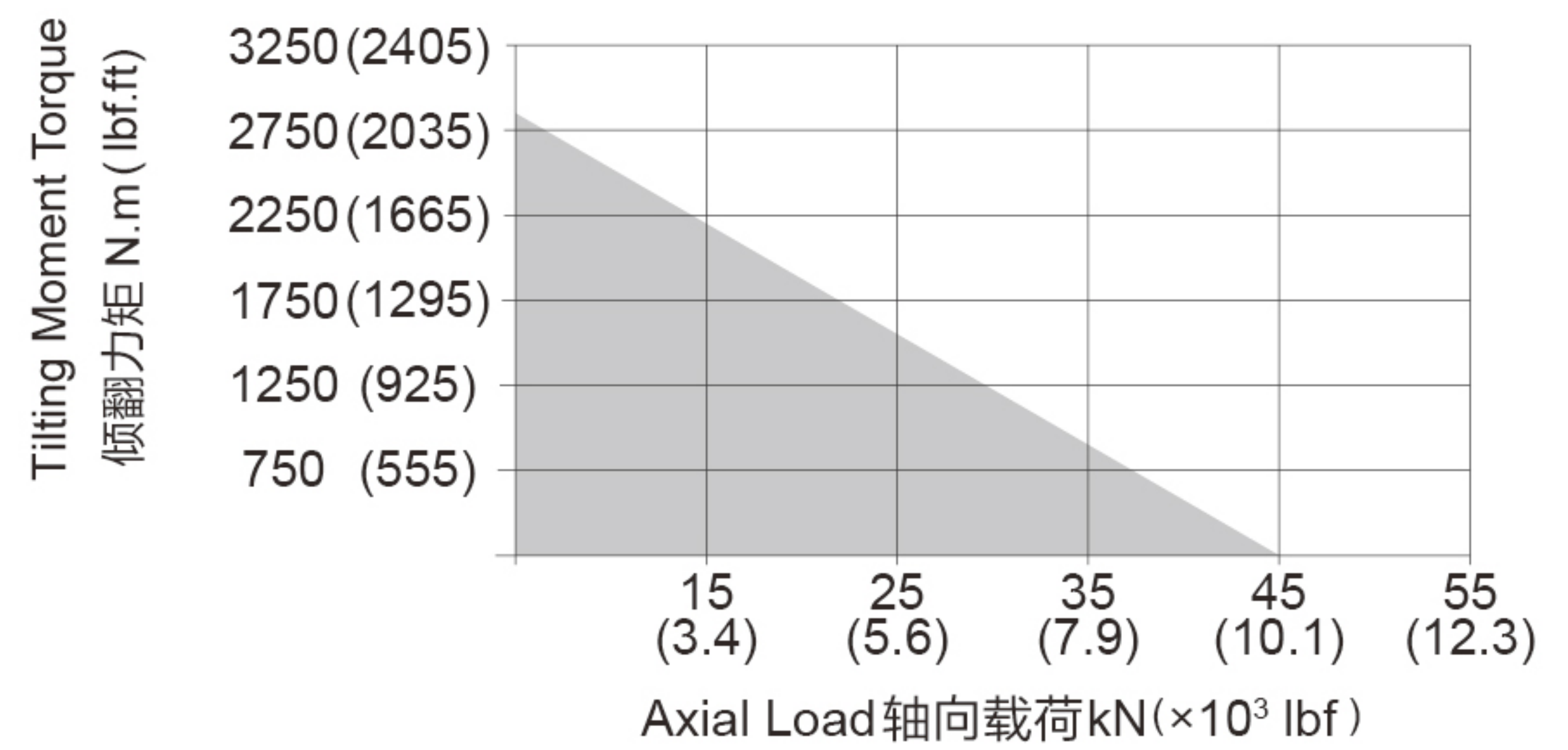
FRONT VIEW
正视图



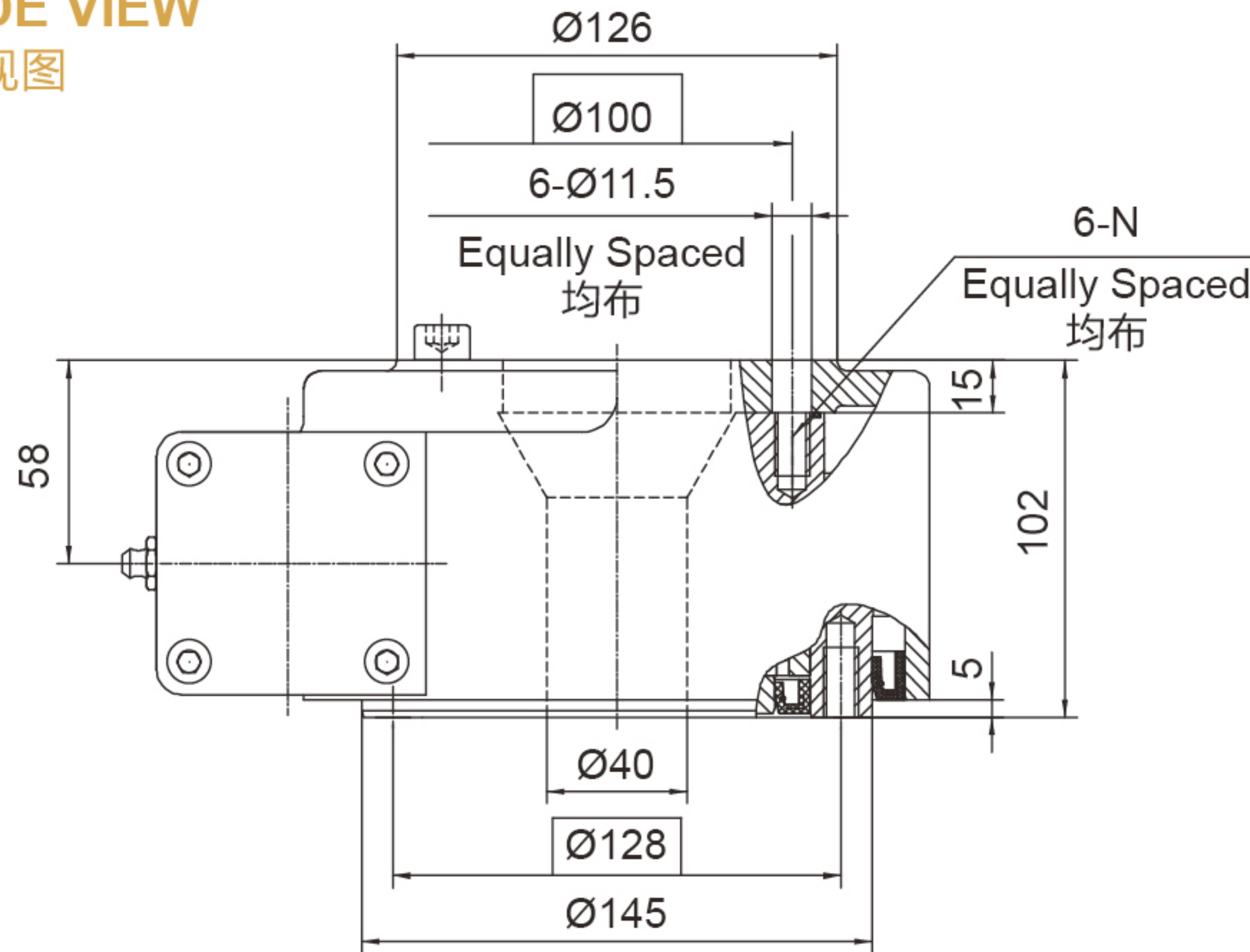
INPUT 输入端视图



承载力矩图 MOMENT LOAD CHART



SIDE VIEW
侧视图



安装孔选项 Mounting Holes Option

| Code 代码 | M (Outer Ring 外圈) | N (Inner Ring 内圈) |
|------------|--------------------------|--------------------------|
| — | M10×1.5 Tap (攻深)20 | M10×1.5 Tap (攻深)18 |
| B | 3/8"-16UNC-2B Tap (攻深)20 | 3/8"-16UNC-2B Tap (攻深)18 |

性能参数表 Slewing Drive Performance Parameters

| Model | Output Torque | Tilting Moment Torque | Holding Torque | Static Axial Rating | Static Radial Rating | Dynamic Axial Rating | Dynamic Radial Rating | Gear Ratio | Tracking Precision | Weight |
|-------|-------------------------|---------------------------|-------------------------|---------------------|----------------------|-----------------------|-----------------------|------------|--------------------|--------|
| 类型 | 输出转矩 | 倾覆力矩 | 保持力矩 | 轴向静载荷 | 径向静载荷 | 轴向动载荷 | 径向动载荷 | 减速比 | 精度等级 | 重量 |
| SE5C | 600 N.m 422.5 lbf.ft | 2800 N.m 2066.4 lbf.ft | 5000 N.m 3690 lbf.ft | 45 kN 10116 lbf | 22 kN 4945.6 lbf | 14.4 kN 3237.1 lbf | 11.1 kN 2495.3 lbf | 62 : 1 | ≤ 0.2° | 16 kg |
| PE5C | 600 N.m 422.5 lbf.ft | 2800 N.m 2066.4 lbf.ft | 5000 N.m 3690 lbf.ft | 45 kN 10116 lbf | 22 kN 4945.6 lbf | 14.4 kN 3237.1 lbf | 11.1 kN 2495.3 lbf | | | |

"A" VIEW AS INPUT IS ALLOWED
输入端允许在 "A" 向视图

SPECIAL DESIGN BASE ON CUSTOMER'S REQUIREMENT
可根据顾客的要求进行非标设计



- Please be sure to remain under the curve. 选型时请确保实际载荷在曲线范围内。
- This drawing is just for your reference. 以上图纸仅供参考。
- This drawing is subject to change due to new design without prior notice. 本公司保留改进产品的权利而不再另行通知。
- Please contact the technical department for dimensions and performance parameters of the drives. 如果需要装置的外形尺寸和性能参考数, 请与技术部门联系。