

SLEWING DRIVE 回转式减速器

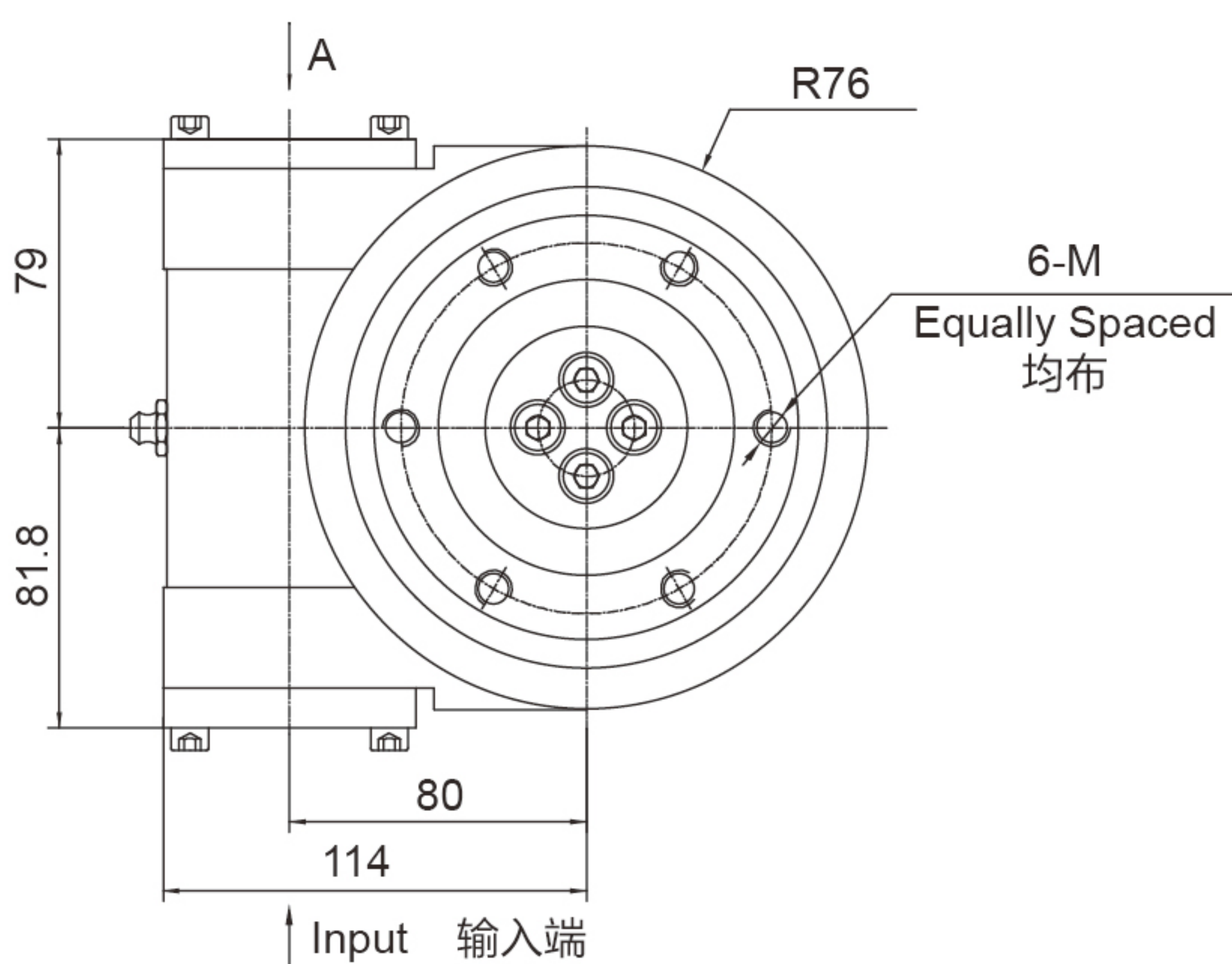
SE3C-PE3C



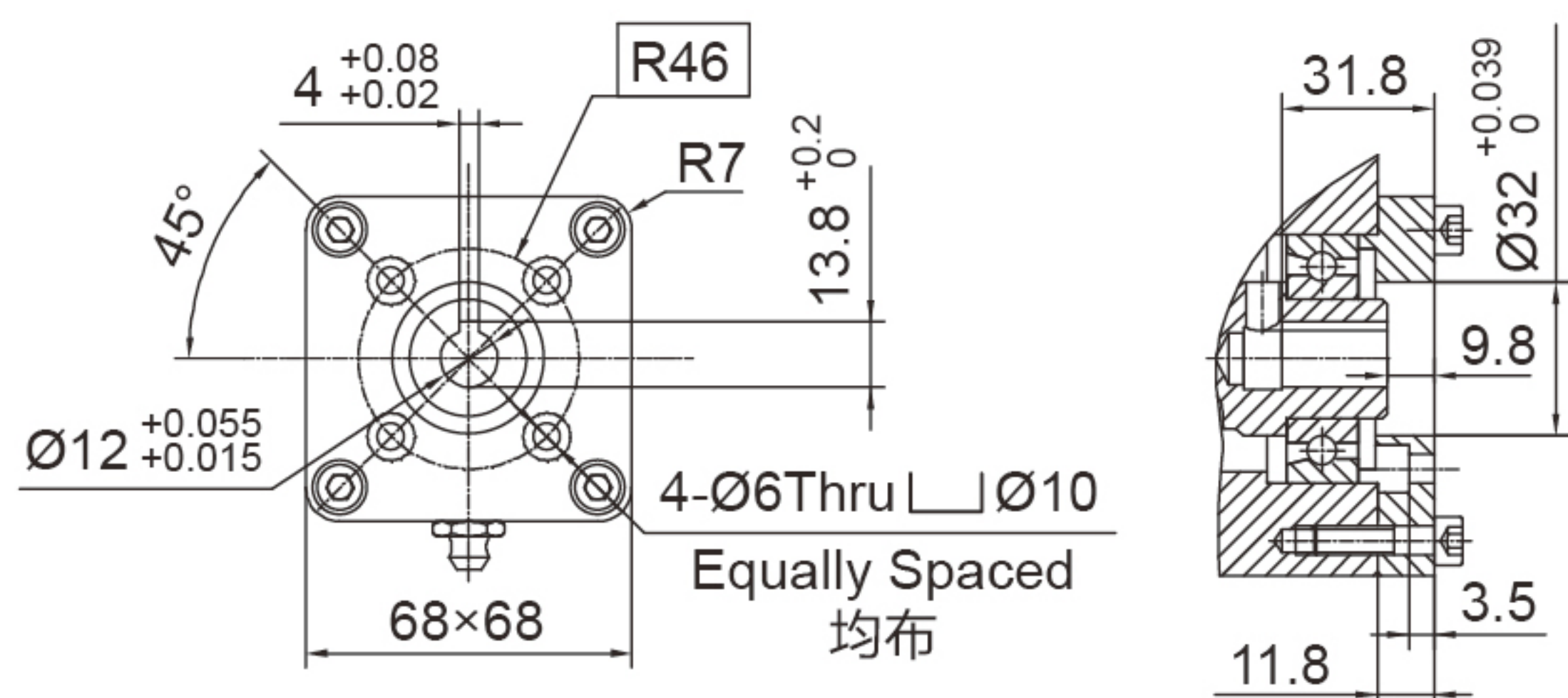
UNITS/单位:mm
1inch=25.4mm

Weight:12kg

FRONT VIEW
正视图

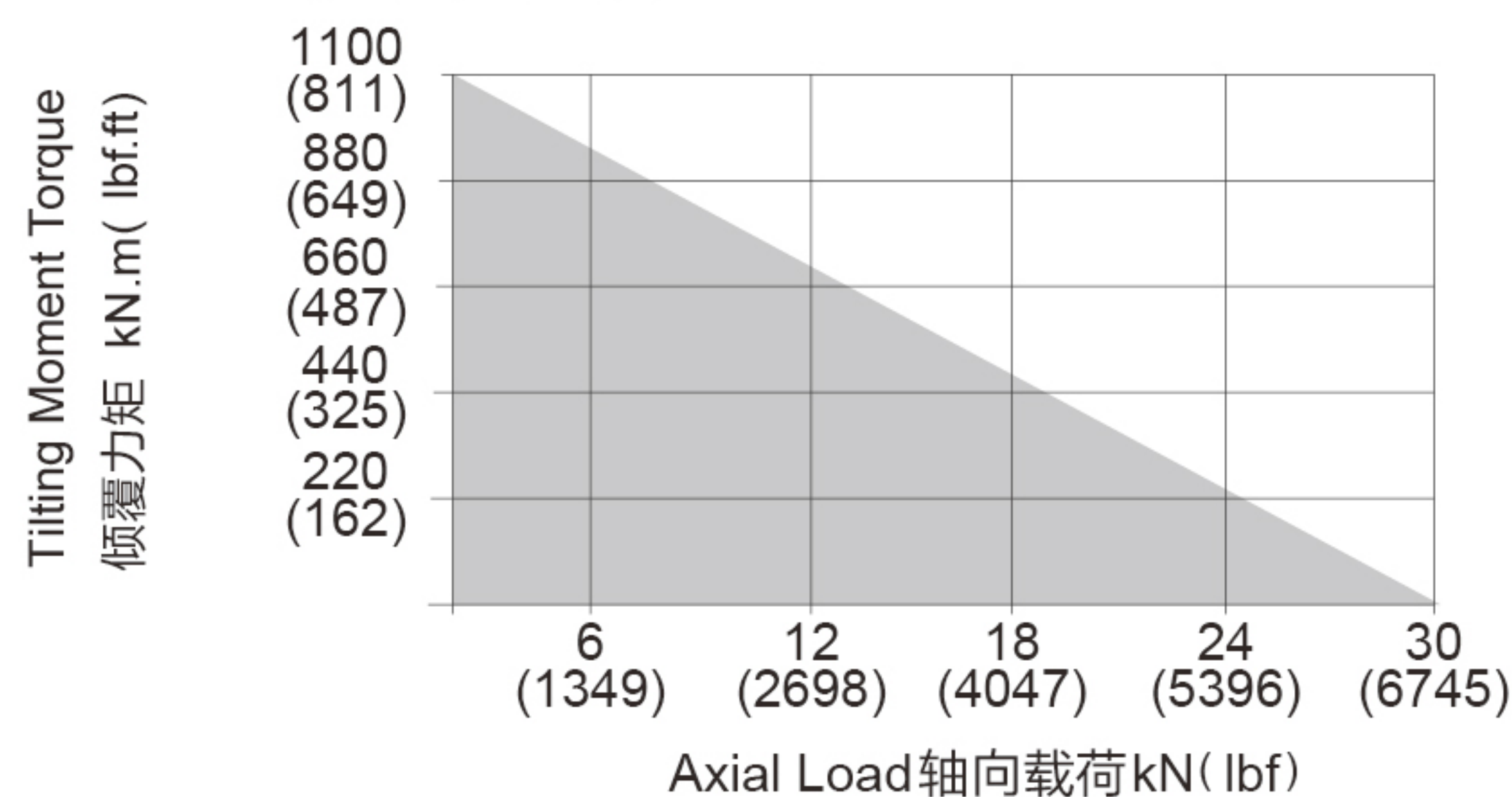


INPUT 输入端视图

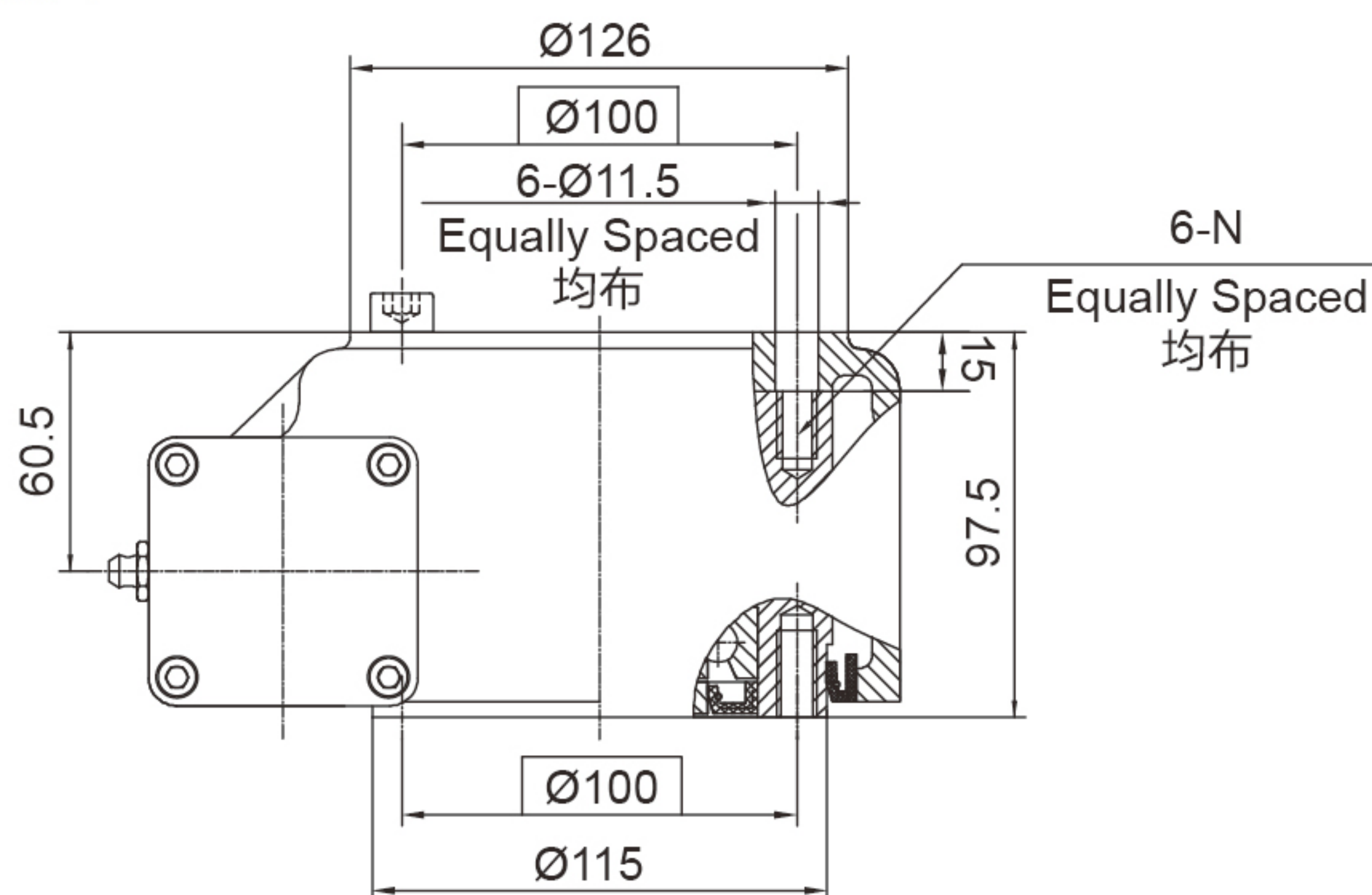


Ø12

承载力矩图 MOMENT LOAD CHART



SIDE VIEW
侧视图



安装孔选项 Mounting Holes Option

| Code 代码 | M (Outer Ring 外圈) | N (Inner Ring 内圈) |
|------------|--------------------------|--------------------------|
| — | M10×1.5 Tap (攻深)22 | M10×1.5 Tap (攻深)17 |
| B | 3/8"-16UNC-2B Tap (攻深)22 | 3/8"-16UNC-2B Tap (攻深)17 |

性能参数表 Slewing Drive Performance Parameters

| Model | Output Torque | Tilting Moment Torque | Holding Torque | Static Axial Rating | Static Radial Rating | Dynamic Axial Rating | Dynamic Radial Rating | Gear Ratio | Tracking Precision | Weight |
|-------|---------------|-----------------------|----------------|---------------------|----------------------|----------------------|-----------------------|------------|--------------------|--------|
| SE3C | 400 N.m | 1100 N.m | 2000 N.m | 30 kN | 16.6 kN | 9.6 kN | 8.4 kN | 62 : 1 | ≤ 0.2° | 12 kg |
| | 295 lbf.ft | 811 lbf.ft | 1475 lbf.ft | 6744 lbf | 3732 lbf | 2158 lbf | 1888 lbf | | | |
| PE3C | 400 N.m | 1100 N.m | 2000 N.m | 30 kN | 16.6 kN | 9.6 kN | 8.4 kN | 62 : 1 | ≤ 0.15° | 12 kg |
| | 295 lbf.ft | 811 lbf.ft | 1475 lbf.ft | 6744 lbf | 3732 lbf | 2158 lbf | 1888 lbf | | | |

"A" VIEW AS INPUT IS ALLOWED
输入端允许在“A”向视图

SPECIAL DESIGN BASE ON CUSTOMER'S REQUIREMENT
可根据顾客的要求进行非标设计



- Please be sure to remain under the curve.选型时请确保实际载荷在曲线范围内。
- This drawing is just for your refenece.以上图纸仅供参考。
- This drawing is susbject to change due to new design without prior notice.本公司保留改进产品的权利而不再另行通知。
- Please contact the technical department for dimensions and performance parameters of the drives.如果需要装置的外形尺寸和性能参考数, 请与技术部门联系。