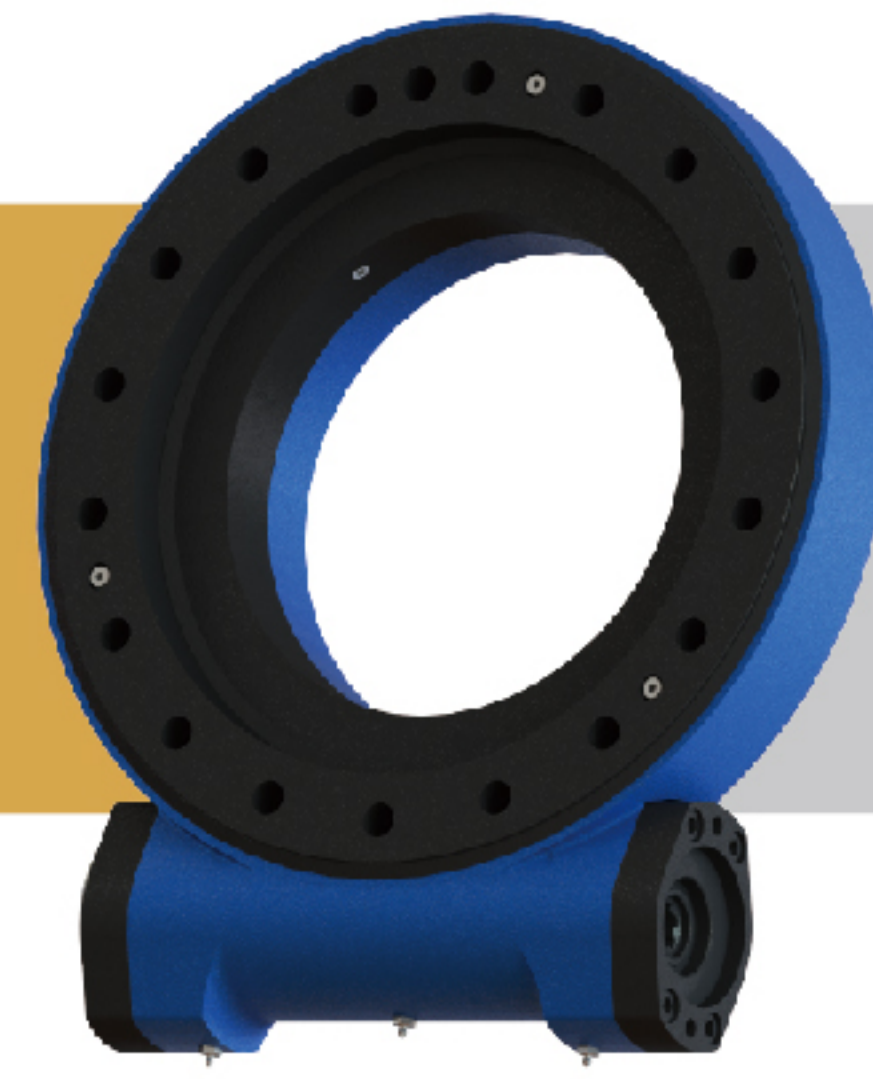


SLEWING DRIVE 回转式减速器

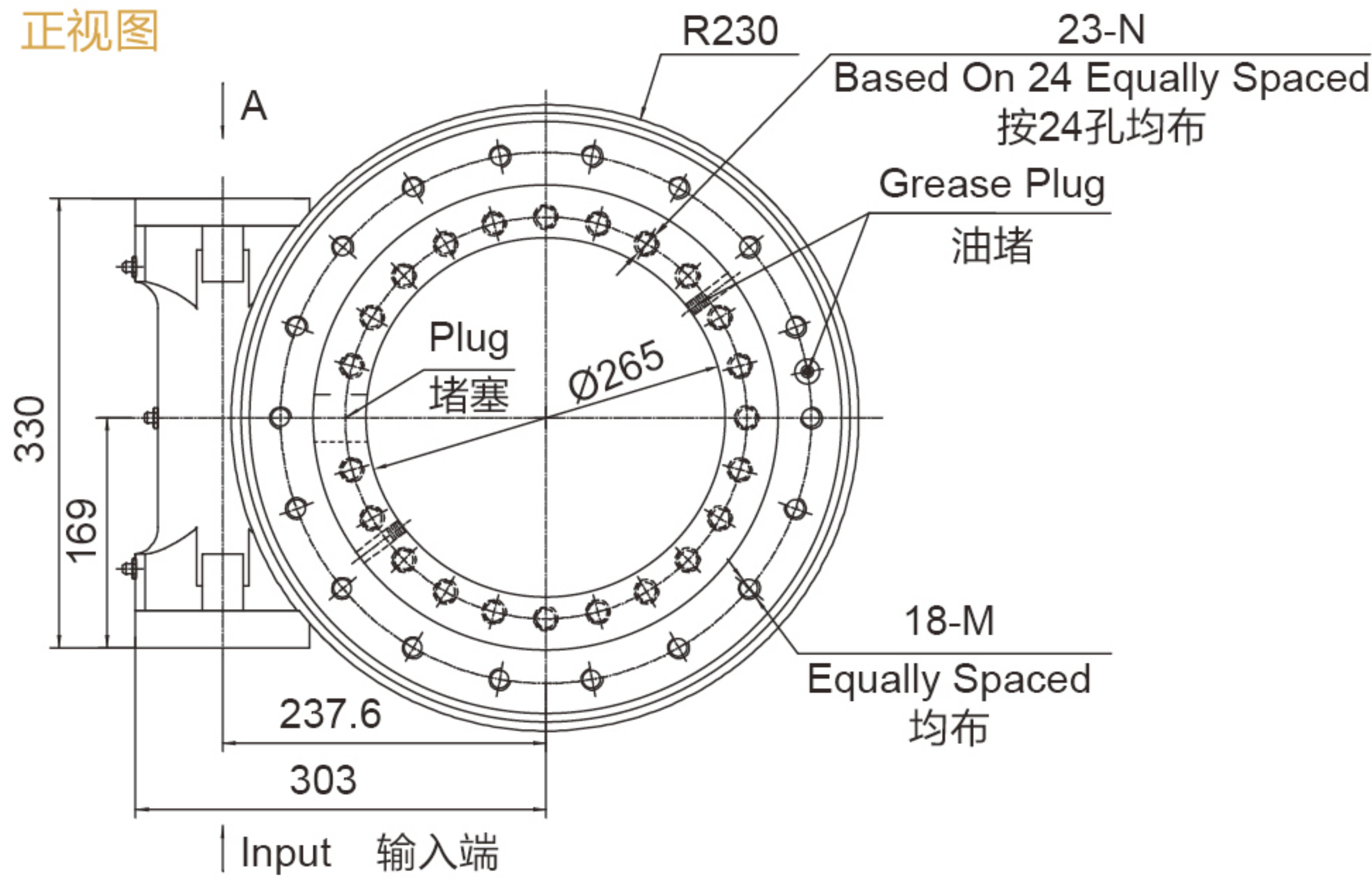
SE14A-PE14A



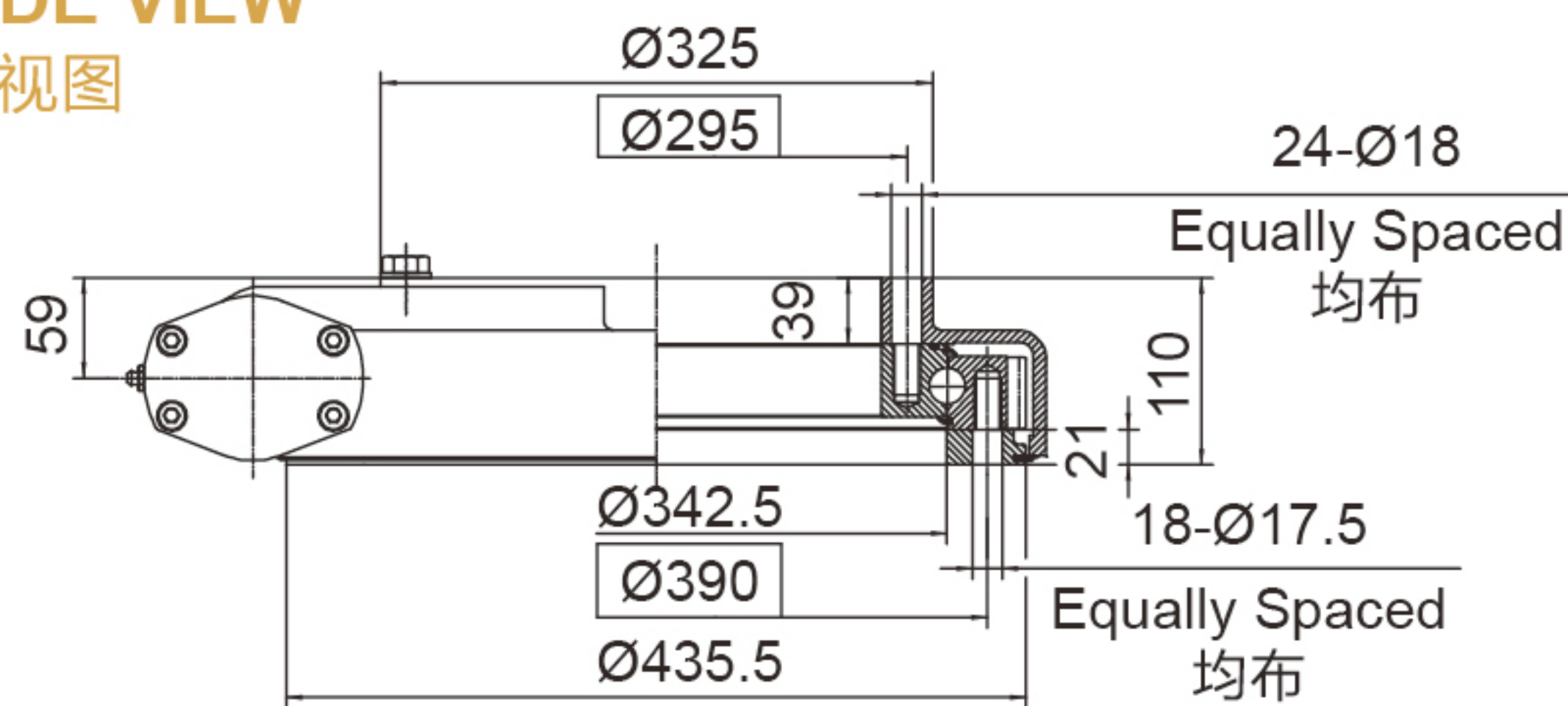
UNITS/单位:mm
1inch=25.4mm

Weight:64kg

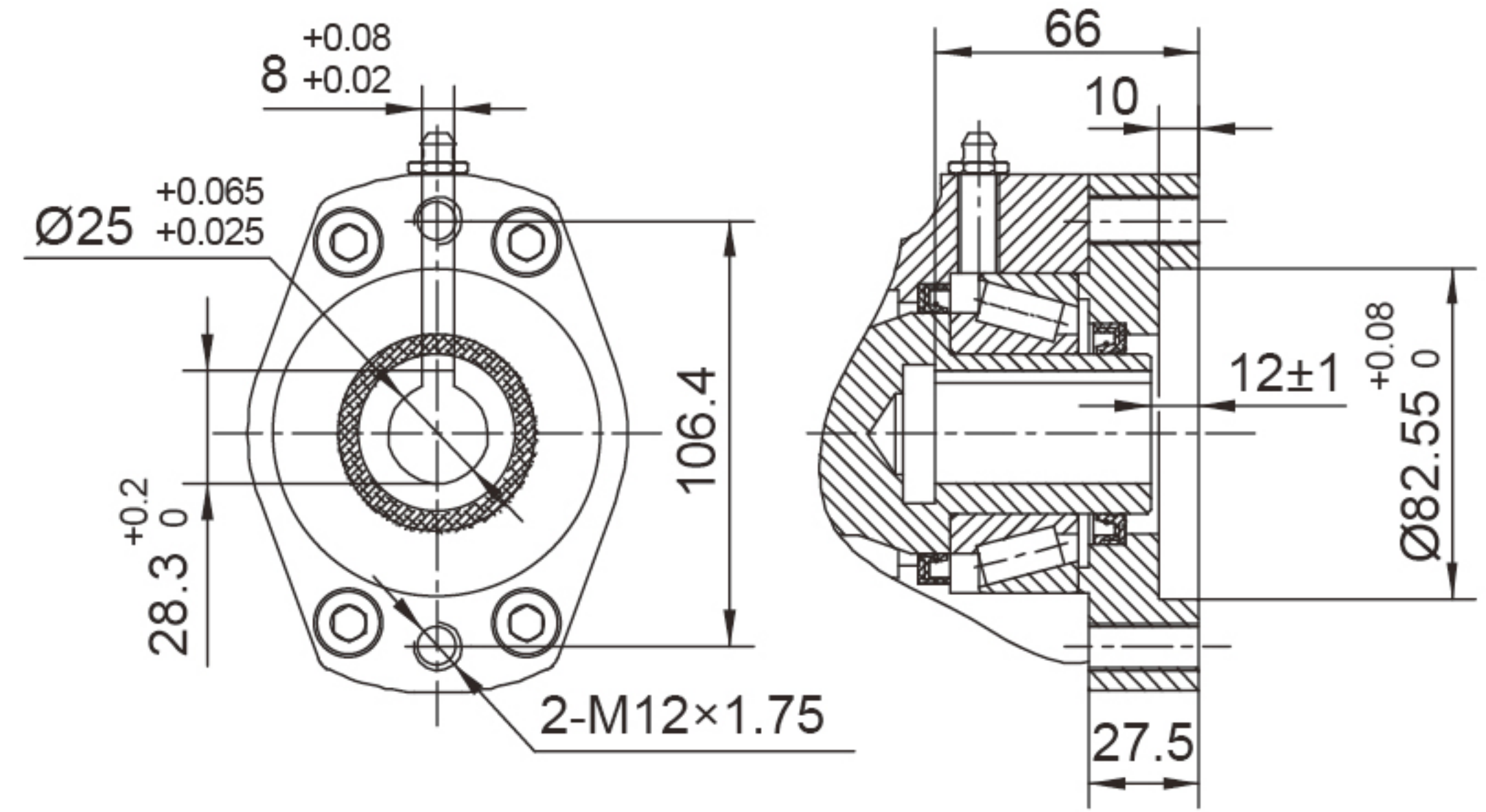
FRONT VIEW
正视图



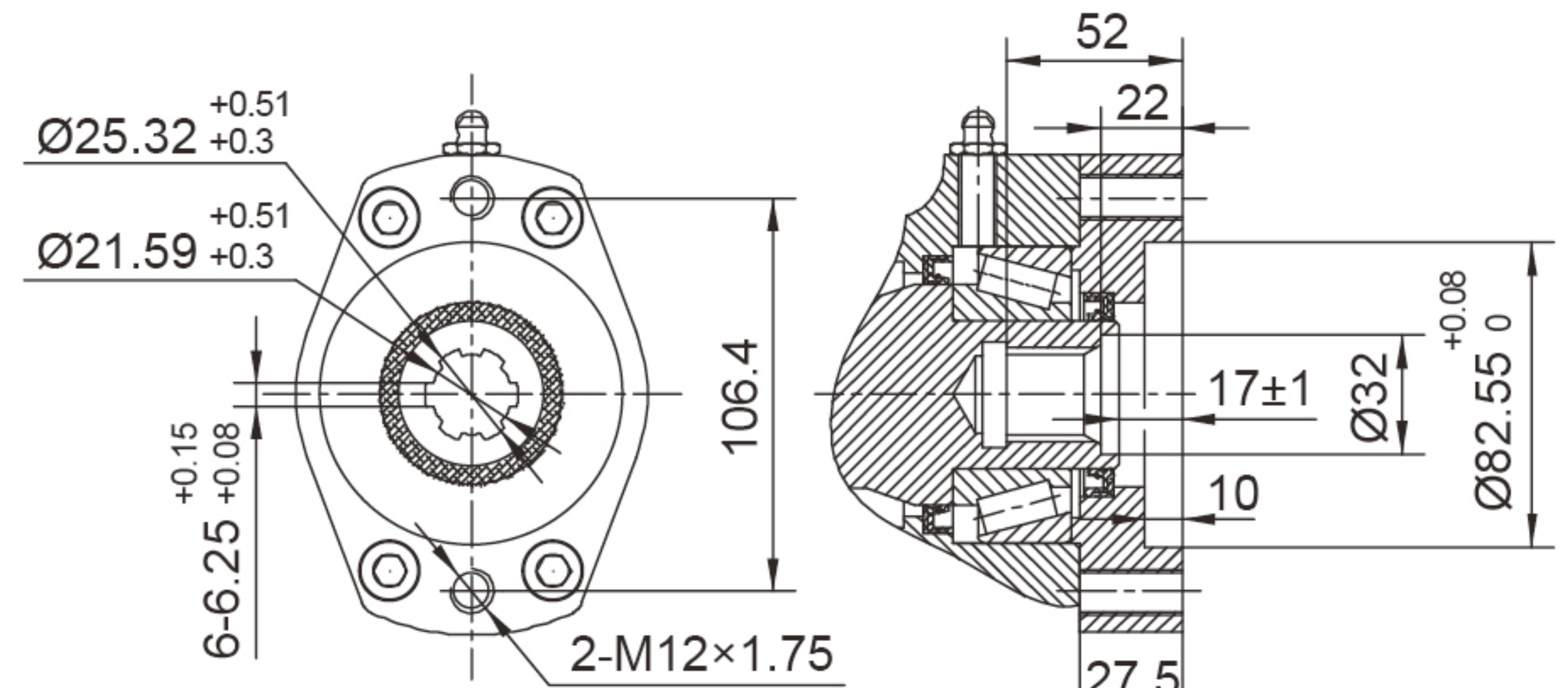
SIDE VIEW
侧视图



INPUT 输入端视图

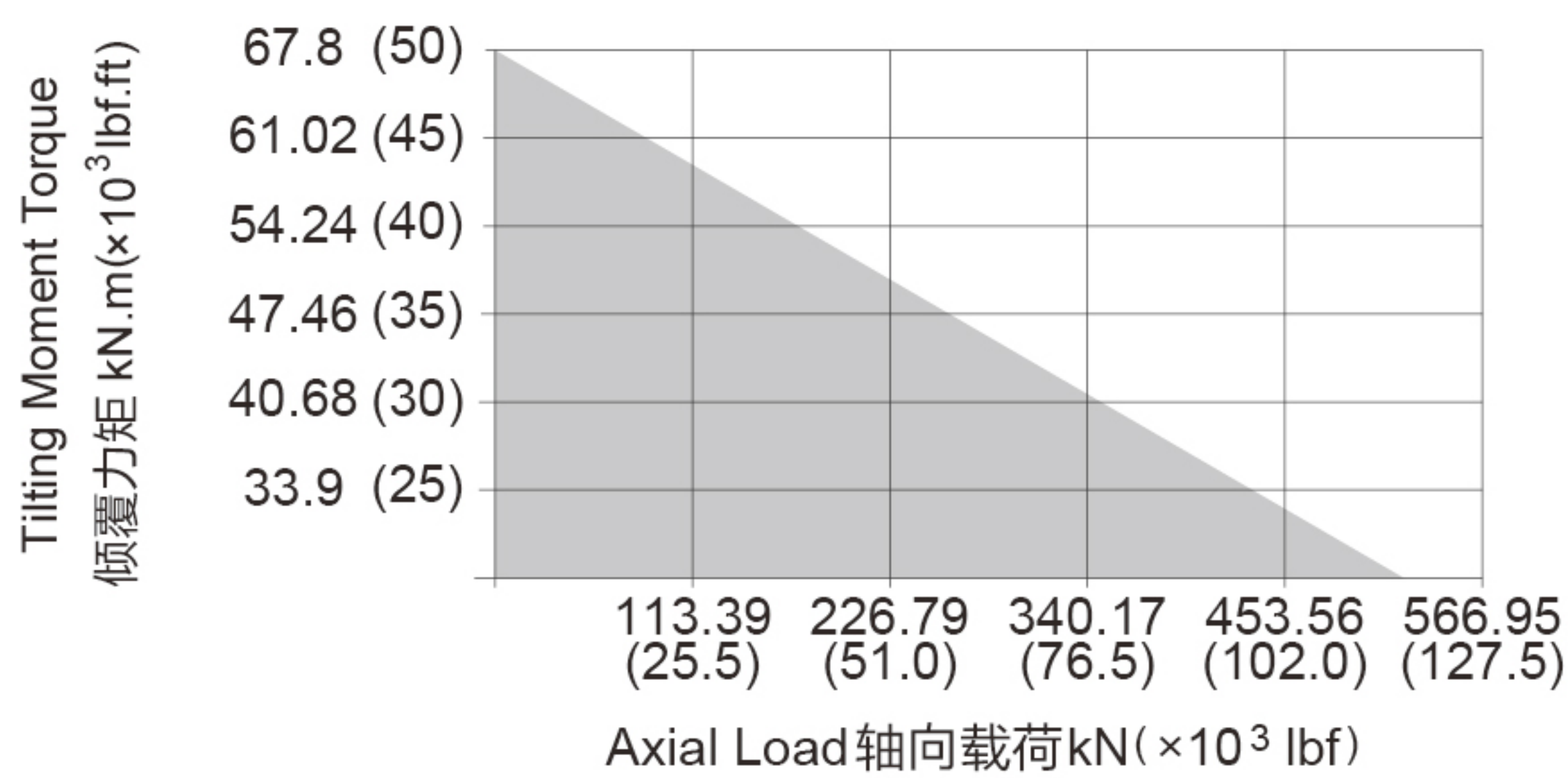


Ø25



6B Spline花键

承载力矩图 MOMENT LOAD CHART



安装孔选项 Mounting Holes Option

Code 代码	M (Outer Ring 外圈)	N (Inner Ring 内圈)
—	M16x2 Tap (攻深)30	M16x2 Tap (攻深)30
T	M16x2 Tap (攻深)30	Ø18 Thru (通孔)
B	5/8"-11UNC-2B Tap (攻深)30	5/8"-11UNC-2B Tap (攻深)30
BT	5/8"-11UNC-2B Tap (攻深)30	Ø18Thru (通孔)

性能参数表 Slewing Drive Performance Parameters

Model	Output Torque	Tilting Moment Torque	Holding Torque	Static Axial Rating	Static Radial Rating	Dynamic Axial Rating	Dynamic Radial Rating	Gear Ratio	Tracking Precision	Weight
SE14A	8 kN.m 5900 lbf.ft	67.8 kN.m 50×10³ lbf.ft	48 kN.m 35×10³ lbf.ft	555 kN 125×10³ lbf	222 kN 50×10³ lbf	133 kN 30×10³ lbf	117 kN 26×10³ lbf	85 : 1	≤ 0.17°	64 kg
PE14A	8 kN.m 5900 lbf.ft	67.8 kN.m 50×10³ lbf.ft	48 kN.m 35×10³ lbf.ft	555 kN 125×10³ lbf	222 kN 50×10³ lbf	133 kN 30×10³ lbf	117 kN 26×10³ lbf	85 : 1	≤ 0.09°	64 kg

"A" VIEW AS INPUT IS ALLOWED
输入端允许在 "A" 向视图

SPECIAL DESIGN BASE ON CUSTOMER'S REQUIREMENT
可根据顾客的要求进行非标设计



- Please be sure to remain under the curve. 选型时请确保实际载荷在曲线范围内。
- This drawing is just for your reference. 以上图纸仅供参考。
- This drawing is subject to change due to new design without prior notice. 本公司保留改进产品的权利而不再另行通知。
- Please contact the technical department for dimensions and performance parameters of the drives. 如果需要装置的外形尺寸和性能参考数, 请与技术部门联系。